



 **HIGHFIELD**  
dare to explore



dare to explore  
2024 range



## ULTRALITE RANGE

As the name suggests, the Ultralites' low weight gives them the weight of a collapsible boat but the performance of a rigid hull. 2.5mm powder coated aluminum hull is matched the options of welded Mehler® PVC tubes or Orca® Hypalon material. A fuel tank shelf/step in the bow allows a fuel tank to be strapped forward. Choose from 15" or 17" tubes in the 260 and up, and a Flat Deck (FD) option for 290/310/340 models.



UL 290 FD

Model	Length	Beam	Inside Length	Inside Beam	Weight	Max People	Max Payload	Max HP	Transom	Chambers	Tube Dia	Deadrise
UL220 SS*	7' 3"	5' 0"	4' 9"	2' 6"	65 lbs	3	653 lbs	5 hp	Short	3	15"	10.5°
UL240 SS	7' 10"	5' 1"	5' 4"	2' 7"	72 lbs	3	653 lbs	6 hp	Short	3	15"	10.5°
UL260 SS	8' 6"	5' 1"	6' 0"	2' 6"	77 lbs	3+1	750 lbs	6 hp	Short	3	15"	10.5°
UL290 SS	9' 6"	5' 1"	7' 0"	2' 6"	86 lbs	4	827 lbs	10 hp	Short	3	15"	15°
UL 240 LT†	7' 10"	5' 6"	5' 3"	2' 7"	74 lbs	3	653 lbs	6 hp	Short	3	17"	10.5°
UL 260 LT	8' 7"	5' 7"	5' 11"	2' 7"	80 lbs	3+1	788 lbs	10 hp	Short	3	17"	10.5°
UL 290 LT	9' 5"	5' 7"	6' 8"	2' 7"	95 lbs	4	882 lbs	15 hp	Short	3	17"	15°
UL 290 FD	9' 5"	5' 7"	6' 8"	2' 7"	99 lbs	4	882 lbs	15 hp	Short	3	17"	15°
UL 310 FD	10' 3"	5' 7"	7' 4"	2' 7"	110 lbs	5	1290 lbs	15 hp	Short	3	17"	15°
UL 340 FD	11' 1"	5' 7"	8' 0"	2' 7"	117 lbs	5+1	1462 lbs	20 hp	Short	3	17"	15°

\* SS = Space Saver design with 15" tube diameter and narrower beam † LT = Large Tube, with 17" tube diameter

## ROLL-UP RANGE

These great "stow-and-go" dinghies are perfect when space is limited. Available with inflatable or sectional aluminum floor, all models come with a powder coated aluminum transom which won't delaminate like traditional plywood transoms. Davit lifting points are built in, and a cup holder is built in to the seat. Bimini top available as an option.



KAM 280

Model	Length	Beam	Inside Length	Inside Beam	Weight	Max People	Max Payload	Max HP	Transom	Chambers	Tube Dia	Flooring
KAM 200	6' 7"	4' 6"	4' 2"	2' 0"	53 lbs	2	551 lbs	3.5 hp	Short	3	14"	air deck
KAM 230	7' 7"	4' 6"	5' 1"	2' 0"	57 lbs	2	772 lbs	4 hp	Short	3	14"	air deck
KAM 250	8' 2"	5' 3"	5' 4"	2' 4"	66 lbs	3	992 lbs	6 hp	Short	3	17"	air deck
KAM 280	9' 2"	5' 3"	6' 4"	2' 4"	73 lbs	4	1102 lbs	10 hp	Short	3	17"	air deck
KAM 320	10' 6"	5' 1"	7' 6"	2' 4"	79 lbs	4 + 1	1246 lbs	15 hp	Short	3	17"	air deck
AL 200	6' 6"	4' 7"	4' 2"	2' 0"	62 lbs	2	551 lbs	3.5 hp	Short	3	14"	alum
AL 230	7' 7"	4' 7"	5' 2"	2' 0"	68 lbs	2	772 lbs	4 hp	Short	3	14"	alum
AL 250	8' 3"	5' 2"	5' 5"	2' 4"	82 lbs	3	992 lbs	6 hp	Short	3	17"	alum
AL 280	9' 2"	5' 3"	6' 4"	2' 4"	93 lbs	4	1102 lbs	10 hp	Short	3	17"	alum
AL 320	10' 6"	5' 3"	7' 8"	2' 4"	106 lbs	4+1	1246 lbs	15 hp	Short	3	17"	alum

NEW Classic 360 MAX



\*Bow cushion included all models, Bowstep included on CL290 and larger.

# CLASSIC RANGE

This range of tenders has been designed to work hard. A durable aluminum hull coupled with a full length keelguard make these ideal for those beach-hopping days. The weight savings of aluminum, compared to equivalent fiberglass RIBs, means you'll enjoy impressive performance with smaller engines, and with a range of sizes, there's a tender for everyone. EVA non-slip deck in grey or brown teak, welded towing eyes, and a large bow locker for fuel tank storage are standard.

*Fold-down transom available as option - ask your dealer*



CLASSIC 340

Model	Length	Beam	Inside Length	Inside Beam	Weight	Max People	Max Payload	Max HP	Transom	Chambers	Tube Dia	Deadrise
CL 260	8' 6"	5' 7"	5' 9"	2' 7"	119 lbs	3+1	794 lbs	15 hp	Short	3	17"	10.5°
CL 290	9' 6"	5' 7"	6' 9"	2' 7"	130 lbs	4	1058 lbs	20 hp	Short	3	17"	15°
CL 310	10' 2"	5' 7"	7' 5"	2' 7"	137 lbs	5	1213 lbs	20 hp	Short	3	17"	15°
CL 340*	11' 2"	5' 7"	8' 1"	2' 7"	157 lbs	6	1215 lbs	25 hp	S or L	3	17"	15°
CL 360*	11' 10"	5' 7"	8' 9"	2' 7"	165 lbs	6	1237 lbs	30 hp	S or L	3	17"	15°
CL 380*	12' 6"	5' 7"	9' 5"	2' 7"	183 lbs	7	1404 lbs	30 hp	S or L	3	17"	15°

\*The CL boats 340-360 are now available in the MAX version with XL Bow locker for batteries and/or extra storage

If you want a simple but capable utility boat or tender, the two largest Classics, the CL420 and CL460 come outfitted with internal fuel tanks and are available either as an open boat to run a tiller engine or with the SDS console and seat package for an affordable light console RIB boat. Also included in the SDS package is full electrical, navigation lights, and automatic bilge pump. A roll bar is also available as a factory ordered option.



CLASSIC 420

Model	Length	Beam	Inside Length	Inside Beam	Weight	Max People	Max Payload	Max HP	Transom	Chambers	Tube Dia	Deadrise
CL 420	13' 10"	6' 11"	10' 5"	3' 5"	552 lbs	8	1814 lbs	60 hp	Long	4	19"	20°
CL 460	15' 1"	6' 11"	11' 7"	3' 5"	627 lbs	9	2081 lbs	80 hp	Long	5	19"	20°

# CLASSIC CONSOLES

Take your Classic RIB to the next level with the addition of the NEW designed FCT-8 console or the new CLASSIC GT Console package.

Designed to fit the CL 290 thru 380, the NEW FCT-8 console is an all-in-one seating and steering approach, now wider to fit a gauge. Includes LED switches and carbon dash.



CLASSIC 340e with electric propulsion, available in 340, 360 and 380 sizes

The GT (available for 340-380) replaces the helm arm with a separate fiberglass console and upholstered side seat. Both options have automatic bilge pump and master battery switch, making these excellent options for those wanting comfort and light weight in a capable tender.

# GT and FCT-8

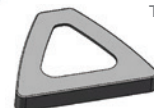


CLASSIC 360 with GT PACKAGE



Classics are available in a range of color schemes, in both Valmex® PVC and Orca® Hypalon tubes.

Overall cover, bow step, and bow cushion also available as options.



The bow cushion now comes standard on all Classic RIB boats.

# SPORT RANGE



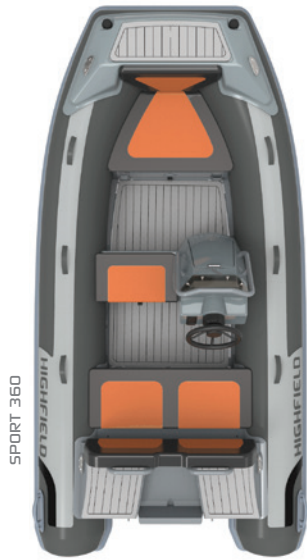
## SPORT 300/330/360

The SPORT series feature everything that defines a luxury small tender, designed to deliver maximum performance and comfort with engines in the 20 to 40hp range.

The smallest Sports offer a wide deck, built-in rear seat, quilted diamond upholstery, and low profile console for an unbeatable level of comfort and storage capacity. Also standard are built-in navigation lighting, welded towing eyes, LED convenience lights, and an automatic bilge pump with manual override. Choose from a wide range of colors for the ultimate in a personal sport tender.



SPORT 330



SPORT 360

Model	Length	Beam	Inside Length	Inside Beam	Weight*	Max People	Max Payload	Max HP	Fuel Tank	Transom	Chambers	Tube Dia	Deadrise
SPORT 300	9' 10"	6' 0"	5' 11"	2' 9"	385 lbs	4	1023 lbs	30 hp	portable	Long	3	17"	20°
SPORT 330	11' 0"	6' 0"	6' 8"	2' 11"	439 lbs	5	1211 lbs	30 hp	6.3 gal	Long	3	17"	20°
SPORT 360	11' 11"	6' 0"	7' 9"	3' 0"	473 lbs	6	1398 lbs	40 hp	6.3 gal	Long	3	17"	20°

\* weight includes boat plus console

## SPORT 390/420/460

The mid-size SPORT models combine all the seagoing capabilities of our Patrol range, but with the looks and feel you demand of a family RIB.

Internal fuel tanks on every boat keep your decks clear while the integrated rear bench with huge storage compartment makes carrying your gear for longer passages a breeze.

Brushed EVA teak flooring, internal LED convenience lighting, recessed cleats & high quality upholstery set this range apart from the competition. Roll bars with mounted stern lights or rear tow posts and removable sun deck cushions available as options.



SPORT 420



SPORT 390

Model	Length	Beam	Inside Length	Inside Beam	Weight*	Max People	Max Payload	Max HP	Fuel Tank	Transom	Chambers	Tube Dia	Deadrise
SPORT 390	12' 10"	6' 4"	8' 2"	3'	497 lbs	7	1579 lbs	60 hp	6.3 gal	Long	3	19"	20°
SPORT 420	13' 11"	6' 9"	8' 11"	3' 7"	681 lbs	8	1744 lbs	70 hp	11.6 gal	Long	4	19"	20°
SPORT 460	15' 1"	6' 10"	9' 7"	3' 7"	731 lbs	9	2011 lbs	90 hp	11.6 gal	Long	5	19"	20°

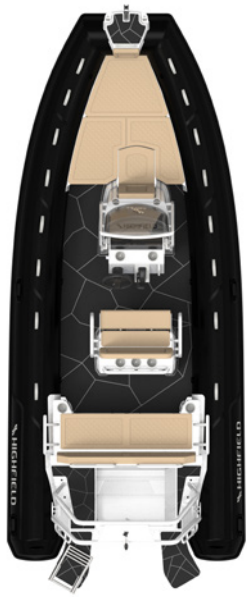


Sports are available in a range of color schemes, in both Valmex® PVC and Orca® Hypalon tubes.

Stainless steel towing post, roll bars, and upholstered sun decks available as options.



SPORT 560



## SPORT 520/560

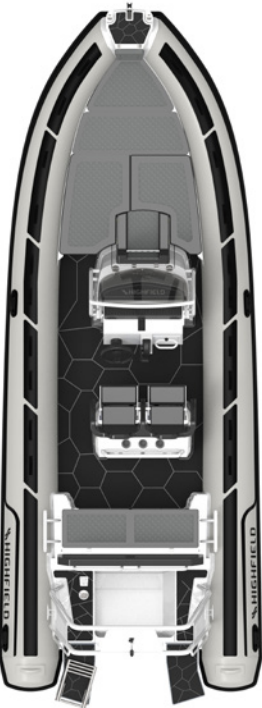
The SPORT 520/560's heavy duty 24° deadrise, combined with large hp ratings and under-deck fuel tank provides a smooth ride in any condition, with three driving positions available. There is a wide bow boarding step with roller and cleat for easy anchoring, and lots of room to hang out in the upholstered bow seating area. Add the optional removable ski pole or towing arch for watersports, and take advantage of the huge rear transom area, complete with telescopic boarding ladder. The 560 has been redesigned for 2024, and both 520 & 560 have everything you need for a great day on the water.



SPORT 560

Model	Length	Beam	Inside Length	Inside Beam	Weight	Max People	Max Payload	Max HP	Fuel Tank	Transom	Chambers	Tube Dia	Deadrise
SPORT 520	17' 2"	8' 1"	11' 3"	4' 3"	1136 lbs	10	2332 lbs	100 hp	21.6 gal	Long	6	20"	24°
SPORT 560	19' 3"	8' 3"	13' 1"	4' 3"	1465 lbs	12	3031 lbs	115 hp	21.6 gal	X-Long	6	20"	24°

SPORT 660



## SPORT 600/660/700/760

All NEW design for 2024 the larger SPORT models combine the efficiency and high performance of our aluminum hulls with deluxe outfitting, making them the ultimate in large luxury RIB tenders and sportboats. Built-in seating and large consoles allow for flexibility in instrumentation and layout.

Brushed EVA teak flooring, internal LED convenience lighting, recessed cleats & high quality upholstery set this range apart from the competition. Tow post with mounted stern light and sun deck cushions available as options to give you a range of uses.



SPORT 660

Model	Length	Beam	Inside Length	Inside Beam	Boat only Weight	Max People	Max Payload	Max HP	Fuel Tank	Transom	Chambers	Tube Dia	Deadrise
SPORT 600	20' 6"	8' 2"	14' 6"	4' 2"	1530 lbs	14	3483 lbs	150 hp	30 gal	X-Long	6	22"	26°
SPORT 660	21' 10"	8' 5"	15' 7"	4' 3"	1720 lbs	14	3594 lbs	200 hp	30 gal	X-Long	6	22"	26°
SPORT 700	22' 11"	9' 7"	15' 8"	5' 7"	2255 lbs	14	3594 lbs	250 hp	60 gal	X-Long	6	23"	26°
SPORT 760	25' 6"	9' 8"	19' 4"	5' 7"	2388 lbs	16	4012 lbs	300 hp	60 gal	X-Long	6	23"	26°

SPORT 800



## SPORT 800/900

New for 2024, the Sport 800 joins the SP900 to round out the line. The SP800 and SP900 are both available for twin engine rigging to provide the best performance and safety in off-shore cruising while offering luxuries you demand from a high-end inflatable boat.

The all-weather hull design and long range capability will ensure that you maximize your time on the water so you really can dare to explore like never before. Built-in dining areas with refrigerator and shower system complete the picture of the perfect boat for an excellent day on the water.



SPORT 800

Model	Length	Beam	Inside Length	Inside Beam	Weight*	Max People	Max Payload	Max HP	Fuel Tank	Transom	Chambers	Tube Dia	Deadrise
SPORT 800	26' 8"	9' 6"	20' 10"	5' 6"	2469 lbs	15	4464 lbs	400 hp	60 gal	X-Long	6	23"	26°
SPORT 900	29' 11"	10' 2"	22' 11"	6' 0"	3924 lbs	15	5930 lbs	600 hp	91 gal	X-Long	6	23"	26°



# PATROL RANGE



PATROL 460 w/jockey console

The PATROL series offers a range of customizable cockpit layouts, giving you a number of options for what kinds of seating and steering set-up you want, ideal for yacht club chase boats, expedition operators, or private owners looking for the ultimate in a big, powerful RIB.

Options vary by model - please consult the Highfield website along with your dealer to find the exact combination of boat, seating/steering combination, and add-ons like T-tops, roll-bars, and other sporty, useful accessories for you.



PATROL 540



PATROL 660

Model	Length	Beam	Inside Length	Inside Beam	Boat only Weight	Max People	Max Payload	Max HP	Fuel Tank	Transom	Chambers	Tube Dia	Deadrise
PA 420	13' 10"	6' 11"	10' 5"	3' 5"	556 lbs	8	1951 lbs	60 hp	8.4 gal	Long	4	19"	20°
PA 460	15' 1"	6' 11"	11' 7"	3' 5"	639 lbs	9	2293 lbs	80 hp	8.4 gal	Long	5	19"	20°
PA 500	16' 5"	7' 6"	13' 8"	3' 11"	972 lbs	10	2502 lbs	100 hp	19 gal	Long	6	20"	24°
PA 540	17' 9"	8' 2"	14' 1"	4' 4"	1022 lbs	12	3031 lbs	115 hp	22.4 gal	X-Long	6	20"	24°
PA 600	20' 3"	8' 6"	14' 9"	4' 4"	1424 lbs	14	3483 lbs	150 hp	30 gal	X-Long	6	22>>16"	26°
PA 660	21' 10"	8' 5"	15' 7"	4' 3"	1720 lbs	13	3384 lbs	200 hp	30 gal	X-Long	6	23>>16"	26°
PA 700	22' 11"	9' 3"	17' 2"	5' 5"	2110 lbs	14	3594 lbs	250 hp	60 gal	X-Long	6	23>>16"	26°
PA 760	25' 1"	9' 3"	19' 1"	5' 5"	2269 lbs	12	3157 lbs	300 hp	60 gal	X-Long	6	23>>16"	26°
PA 860	28' 6"	10' 2"	20' 8"	6' 0"	2549 lbs	20	5512 lbs	2x300hp	91 gal	TwinXL	6	23"	26°

Specifications on all boats subject to change without notice. Fuel tank capacities are for US-equipped boats, which will vary from Highfield's international specifications.

[www.highfi eldnorthamerica.com](http://www.highfi eldnorthamerica.com)

**HIGHFIELD**  
dare to explore

Your Local Dealer



Register your Highfield online to activate the extended 5-year warranty for Valmex® PVC material and 10-year coverage for Orca® Hypalon.

PRINTED SEPTEMBER 2023